

## Power Relay Series 功率继电器系列 -- JYP

### FEATURES特点

- 尺寸: 24.5 × 12.5 × 20.5(mm)  
Dimension: 24.5 × 12.5 × 20.5(mm)
- 最大20A触点切换能力  
Switching capacity: 20A
- 触点与线圈介质耐压5000V  
Dielectric strength between coil and contact: 5KV
- 印制板式和快连接式  
PCB or Flat quick-connect terminals
- 适用于微波炉等产品  
Typical application: Microwave oven



### CONTACT PARAMETERS触点参数

|                                   |            |
|-----------------------------------|------------|
| Contact Form触点形式                  | A-1组常开     |
| Rating Load (Resistive) 额定负载 (阻性) | 16A 250VAC |
| Max. Switching Current 最大切换电流     | 20A        |
| Max. Switching Voltage 最大切换电压     | 250VAC     |
| Max. Switching Power 最大切换功率       | 4000VA     |

### CHARACTERISTICS性能参数

|                                 |  |                                  |
|---------------------------------|--|----------------------------------|
| Contact Materials触点材料           | Ag Alloy银合金  |                                  |
| Contact Resistance接触电阻          | 100 mΩ Max   |                                  |
| Operate Time吸合时间                | 10ms. Max  |                                  |
| Release Time释放时间                | 10ms. Max  |                                  |
| Insulation Resistance绝缘电阻       | 1000MΩ Min. (DC500V)                                 |                                  |
| Initial Dielectric Strength介质耐压 | between open contacts:<br>触点与触点间:                    | AC1,000V, 50/60Hz 1Min           |
|                                 | between contacts and coil:<br>触点与线圈间:                | AC5,000V, 50/60Hz 1Min           |
| Vibration Resistance抗振动         | Damage limits:<br>耐久:                                | 10~55Hz Double Amplitude双振幅1.5mm |
|                                 | Malfunction:<br>误动作:                                 | 10~55Hz Double Amplitude双振幅1.5mm |
| Shock Resistance抗冲击             | Damage limits:<br>耐久:                                | 10G Min                          |
|                                 | Malfunction:<br>误动作:                                 | 100G Min                         |
| Life寿命                          | Mechanical Life (10800 per hour)<br>机械寿命 (每小时10800次) | 1 × 10 <sup>6</sup>              |
|                                 | Electrical Life (1800 per hour)<br>电气寿命 (每小时1800次)   | 1 × 10 <sup>5</sup>              |
| Ambient Temperature环境温度         | -40°C ~ +105°C (No condensation) (不冷凝)               |                                  |
| Unit Weight单位重量                 | 约Approx. 10.0g                                       |                                  |



### COIL RATINGS (at23°C) 线圈参数 (在23°C)

| Coil Nominal Voltage<br>额定电压 (VDC) | Nominal Current<br>额定电流 ±10% (mA) | Coil Resistance<br>线圈电阻 ±10% (Ω) | Max. Continuous Voltage<br>最大连续外加电压       | Pick-Up Voltage<br>吸合电压 (Max)            | Drop-Out Voltage<br>释放电压 (Min)           | Rated power<br>额定功率 |
|------------------------------------|-----------------------------------|----------------------------------|---|--|--|---------------------|
| 3                                  | 133.34                            | 22.5                             | Coil Nominal Voltage<br>130%<br>额定电压的 130 | Coil Nominal Voltage<br>75%<br>额定电压的 75% | Coil Nominal Voltage<br>10%<br>额定电压的 10% | About 0.4W<br>约0.4W |
| 5                                  | 80.00                             | 62.5                             |   |  |  |                     |
| 6                                  | 66.67                             | 90                               |   |  |  |                     |
| 9                                  | 44.45                             | 202.5                            |   |  |  |                     |
| 12                                 | 33.34                             | 360                              |   |  |  |                     |
| 18                                 | 22.23                             | 810                              |   |  |  |                     |
| 24                                 | 16.67                             | 1440                             | Coil Nominal Voltage<br>130%<br>额定电压的 130 | Coil Nominal Voltage<br>75%<br>额定电压的 75% | Coil Nominal Voltage<br>10%<br>额定电压的 10% | About 0.5W<br>约0.5W |
| 3                                  | 166.67                            | 18                               |   |  |  |                     |
| 5                                  | 100.00                            | 50                               |   |  |  |                     |
| 6                                  | 83.34                             | 72                               |   |  |  |                     |
| 9                                  | 55.56                             | 162                              |   |  |  |                     |
| 12                                 | 41.67                             | 288                              |   |  |  |                     |
| 18                                 | 27.78                             | 648                              | 24  | 20.84                                    | 1152                                     |                     |

### ORDERING INFORMATION 订货标记

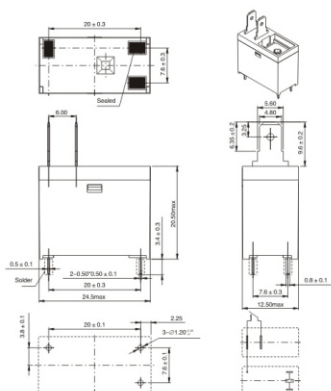
| JYP-DC12V-A-D-P1-(XXX)<br><u>1</u> <u>2</u> <u>3</u> <u>4</u> <u>5</u> <u>6</u>   |  |
|---|--|
| 1. Model Number 基本型号 JYP6<br>2. Coil Voltage 线圈规格 (VDC):<br>DC3V, DC5V, DC6V, DC9V, DC12V, DC18V, DC24V<br>3. Contact form: A-1Form A<br>触点形式: A-1组常开<br>4. Coil Power: No - 0.4W, D-0.5W<br>线圈功率: 无-0.4W, D-0.5W | 5. PCB板设计类型:<br>P1: PCB板设计1; P2: PCB板设计2;<br>P3: PCB板设计3; P4: PCB板设计4;<br>PCB Type:<br>P1: PCBType1; P2: PCBType2;<br>P3: PCBType3; P4: PCBType4;<br>6. Customer Special Code :XXX-Customer Special Requirements<br>No - Standard Type<br>客户特性号: XXX-客户特殊要求, 无-标准型 |

**SAFETY STANDARD安规认证**

| AuthType Basic认证类别       | CQC        | TUV        | UL/C_UL                  |
|--------------------------|------------|------------|--------------------------|
| Authentication Load 认证负载 | 16A 250VAC | 16A 250VAC | 16A 250VAC<br>20A 125VAC |

**OUTLINE DIMENSIONS (UNIT:mm)外形尺寸 (单位: mm)**

外形图/Out Dimensions

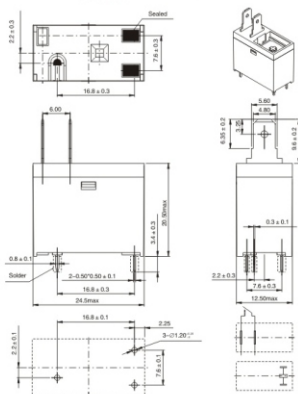


安装孔尺寸/PCB Layout  
(底视图)/(Bottom View)

接线图/Wiring Diagram  
(底视图)/(Bottom View)

P1-PCB板设计1  
(P1-PCB Type1)

外形图/Out Dimensions

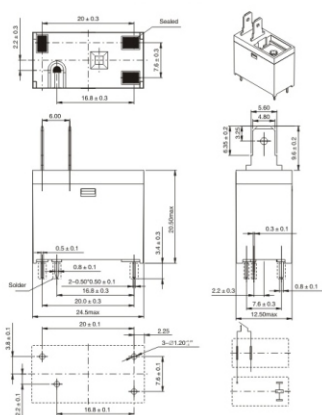


安装孔尺寸/PCB Layout  
(底视图)/(Bottom View)

接线图/Wiring Diagram  
(底视图)/(Bottom View)

P2-PCB板设计2  
(P2-PCB Type2)

外形图/Out Dimensions

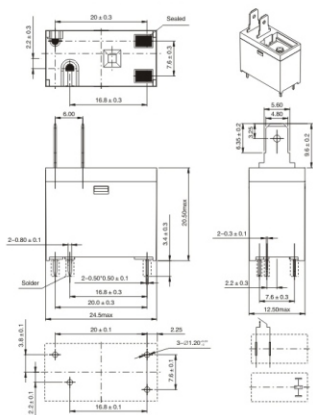


安装孔尺寸/PCB Layout  
(底视图)/(Bottom View)

接线图/Wiring Diagram  
(底视图)/(Bottom View)

P3-PCB板设计3  
(P3-PCB Type3)

外形图/Out Dimensions



安装孔尺寸/PCB Layout  
(底视图)/(Bottom View)

接线图/Wiring Diagram  
(底视图)/(Bottom View)

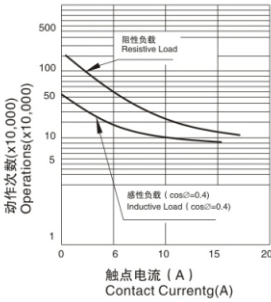
P4-PCB板设计4  
(P4-PCB Type4)

**TYPICAL USE 典型用途**

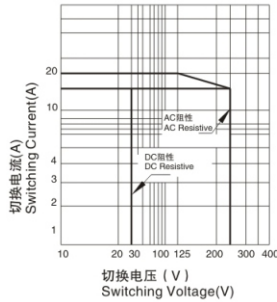
- Household equipment, Office equipment, Audio, Smart home, Smart socket, Etc..
- 家用设备, 办公设备, 音响, 智能家居, 智能插座等

**PERFORMANCE CHART 性能曲线图**

寿命曲线  
Life Curves



最大切换功率  
Max. Switching Power



线圈温升  
Coil Temperature Rise

